



International House
Bangkok | Chiang Mai

Study Holiday in Thailand Guide to Enrolment

General English 15

GE15 is a superb opportunity for you to practise your English ability, as it focuses on all four skill areas of the language: listening, reading, writing and speaking. Vocabulary and grammar are also covered, giving you the chance to polish up on prior knowledge or be introduced to new concepts in an engaging and supportive environment. Classes consist of no more than 12 students, with

an average of 6-8; ensuring that each learner is provided with personalised feedback.

The course attracts students from a wide variety of countries, particularly European and East Asian, meaning learners are exposed to a wide range of accents and cultural backgrounds which creates diverse and interesting classrooms. There are four available levels of GE15: Elementary, Pre-intermediate, Intermediate, and Upper Intermediate. This selection allows you to join a class which best suits your current ability. General English 15 is run every morning from Monday to Friday, with lessons from 9:00 to 11:00 and 11:15 to 12:15. You can join this course every Monday and can study for as many weeks as you wish.

Price for General English 15
(15 hours per student per week)

5,700 baht*

Business English 25

As an extension of the GE15 course, Business English 25 allows students to take part in general English classes in the morning, catering to all their day-to-day and grammatical needs, before studying a further 2 hours from 13.15-15.15 in a classroom where the context is entirely business.

BE25 students will spend their afternoons learning how English is used to negotiate, give presentations, respond appropriately to telephone calls, write formal emails and much more. Due to the language of business, this course is only available to learners who are pre-intermediate level or above. As with all our courses, learners will get a balanced practice of all four skills – speaking, listening, reading and writing, all within the context of work and business.



General English 25

General English 25 is for learners who are dedicated to improving as much as possible or who simply want to make the most of the opportunity a Study Holiday in Thailand provides. With a ten hour extension of the normal GE15, General English 25 provides further classes from 13.15-15.15, Monday to Friday.

These classes will cover a range of topics that give students even more practice with a range of grammar and vocabulary. For learners who want to continue their learning and build on their morning classes, GE25 offers a perfect way of doing so. Like GE15, GE25 afternoon classes are a maximum of 12 students, and usually run with one or two fewer students than the morning classes, allowing even more personalised feedback in lessons.

Price for General and Business English 25
(25 hours per student per week)

9,500 baht*



Intensive Business English 25

This course is a combination of the afternoon 13:15-15:15 business class with a further 3 hours per day of private 1:1. This is for students who want the customized course, focus, and feedback offered in a 1:1 classroom setting. Classes can concentrate on exactly what the student wants and needs in order to succeed in a business setting. The private class can concentrate on almost anything related to business: presentations, email writing, customer service, negotiating, business communication, marketing, economics, interview preparation and more.

Intensive Business English 20

Similar to IBE25, intensive business English 20 has 2 hours of group class from 13:15 to 15:15, and 2 additional hours of private 1:1 per day. Again similar to IBE25, the focus of the course can be on almost any topic related to business English such as presentations, email writing, customer service, negotiating, business communication, marketing, economics, interview preparation and more.

Exam Preparation 25

IELTS, TOEFL, TOEIC, SAT, GED, GAT, CAE, CPE, FCE, IGCSE, CU-TEP, or TU-GET: If you are planning to take one of the aforementioned exams and need to prepare, while also working on your overall English ability, EX 25 provides the perfect solution for you. Many of the above tests require specific skills but first and foremost are a test on your English level; only working on the exam and ignoring your overall level can have a negative impact on your score. EX 25 students will join GE15 classes in the morning to raise their overall level and to practice the various skills in classes with students of a range of nationalities. In the afternoon, students will spend two hours in a private 1:1 class from 13.00-15.00, focusing on different aspects and skills required on the exam.

Exam Preparation 10

IELTS, TOEFL, TOEIC, SAT, GED, GAT, CAE, CPE, FCE, IGCSE, CU-TEP, or TU-GET: If you are planning on taking one of these exams, EX10 is another great choice to get the score that you need. This course consists of 10 hours of 1:1 classes per week focusing only on the exam itself and the exact areas you need to work on. A private class doesn't waste any time on material you already know; the teacher only has you to focus on so they choose the course content to fit your requirements. A private class is always the quickest way to get the score that you need.

Private 10, 15 or 25

These personalised language courses consist of 2 or more hours of individual tuition per day, Monday - Friday, for one or more weeks.

The contents and starting dates of these private classes can be arranged to suit the individual student's needs. For example, courses can be designed for people who need to prepare for an exam, who want to concentrate on business English, or who need to improve their general English - we can literally teach anything you want.

We offer individual tuition at all levels from beginner to advanced. We can also offer similarly tailor-made classes for two, three, or more students studying together, providing they have similar levels and linguistic needs.

Total Hours	1:1	1:2	1:3	1:4
10	12,500	8,300	7,000	6,250
20	24,000	15,500	13,500	12,000
40	46,000	29,000	26,000	23,000



MIXED 25

This course consists of 25 hours of tuition per week comprising of General English 15, Monday to Friday, plus 10 hours of private tuition.

Classes are held from 09:00 to 12:15 Monday to Friday and at times in the afternoon to suit you, with a 15 minute break taken at 11:00 and a lunch break from 12:15 to 13:15. Classes have a maximum of 12 students (average 6-8).

The Mixed English 25 Course is offered at 4 levels. Students may start a General English 15 Course any Monday throughout the year (except public holidays). Students receive balanced practice in developing speaking, understanding, vocabulary, reading, writing, grammar, pronunciation, fluency and confidence. In the afternoon from 13:15 to 15:15 students are able to study any topic they want.

Custom-Designed Courses for Special, Closed Groups

We can offer flexible courses designed specifically for a group's needs and time availability. This can be for students who need English for specific purposes; for example, exams, work-related English, teacher training, preparing a business trip or presentation. Please contact us with your specific needs at studyholiday@ihbangkok.com or studyholiday@ihchiangmai.com



*For every course

Included: Classes, level test, certificates, programme of social and cultural activities, access to all school facilities.

Not Included: Entrance fees and transport for optional social activities programme and registration fee.



Package	GE15	GE25	BE25	IBE25	IBE20	EX25	EX10	Mix25
Subject	General	General	Business	Business	Business	Exam	Exam	By Choice
Total Hours (Daily)	3 Hrs	5 Hrs	5 Hrs	5 Hrs	4 Hrs	5 Hrs	2 Hrs	By Choice
9:00 - 12:15*	✓	✓	✓	✗	✗	✓	✗	✓
13:15 - 15:15	✗	✓	✓	✓	✓	Private	Private	Private
Group Hours (weekly)	15 Hrs	25 Hrs	25 Hrs	10 Hrs	10 Hrs	15 Hrs	✗	15 Hrs
Private Hours (weekly)	✗	✗	✗	15 Hrs	10 Hrs	10 Hrs	10 Hrs	5 - 25 Hrs
Maximum students	12	12	12	12	12	12	1	12
Minimum Level	Elementary	Elementary	Pre-Int.	Pre-Int.	Pre-Int.	Pre-Int.	Pre-Int.	Elementary
Maximum Level**	Upper Int.**	Upper Int.	Upper Int.	Upper Int.	Upper Int.	Upper Int.	Upper Int.	Upper Int.

Weekly Prices

Duration	GE15	GE25	BE25	IBE25	IBE20	EX25	EX10	Mix25
1 week	฿6,300	฿10,100	฿10,100	฿22,800	฿16,550	฿18,800	฿12,500	Combine
2 weeks				฿21,800	฿15,800	฿17,700	฿12,000	GE15
3 weeks	฿5,700	฿9,500	฿9,500	฿21,000	฿15,300	฿16,200		with
4-6 weeks								Private 1:1
7-12 weeks	฿5,400	฿9,000	฿9,000	฿20,850	฿15,100	฿15,900	฿11,500	Class
13-24 weeks	฿5,100	฿8,500	฿8,500	฿20,650	฿14,900	฿15,600		Below
25+ weeks	฿4,800	฿8,000	฿8,000	฿20,450	฿14,700	฿15,300		

General English - Private Courses

Teacher to student ratio	10 hours	20 hours	40 hours
1:1	฿11,500	฿22,000	฿42,000
1:2	฿7,650	฿14,250	฿26,500
1:3	฿6,500	฿12,500	฿23,500
1:4	฿5,750	฿11,000	฿21,000

English for Special Purposes - (IELTS, GED, TOEIC, TOEFL, FCE etc)

Teacher to student ratio	10 hours	20 hours	40 hours
1:1	฿12,500	฿24,000	฿46,000
1:2	฿8,300	฿15,500	฿29,000
1:3	฿7,000	฿13,500	฿26,000
1:4	฿6,250	฿12,000	฿23,000

*Prices listed are per student per course

Education Visa Requirements

We are happy to assist you with an Education Visa from the Thai Ministry of Education but the following requirements need to be met:

- **GE15, EX10:** Minimum 12 week course
- **GE 25, BE 25, IBE20/25, EX25:** Minimum 8 week course
- **Private 1:1:** Minimum 120 hour course per 4 month period

Note

* 15 Minute break at 11.00

GE = General English
BE = Business English
EX = Exam Preparation

EX: IELTS, TOEFL, TOEIC, GED, KET, PET, FCE, CAE, CPE, BEC.

1. Courses start every Monday.
2. Lessons from Monday to Friday.
3. Study for any number of weeks

To receive a discount, you must sign up for the specified amount of weeks at one time.

Every course includes: Classes, level test, book, certificates, programme of social and cultural activities and access to all school facilities.

Not Included: 3,000 Baht Registration fee for airport pickup support, accommodation support, and/or ED Visa support.

www.ihbangkok.com/holidays

Accommodation

International House Bangkok



International House
Bangkok

Furama Asok

- 32 Square Meters
 - Weekly Price: 15,500
 - Monthly Price: 46,500
 - Daily Cleaning
 - Four Star Hotel
 - Microwave, Washing Service,
 - Gym, Sauna, Jacuzzi Pool, good Location, Restaurant
- 10 min walk

*3,000 baht deposit



Airport Transfer Fees (One Way)

Up to 3 people 1,050 Thai baht

There is a frequent bus and train service from Bangkok international airport to the city centre. However, we recommend that students take advantage of our airport meeting and transfer service on arrival.

Please note that we need the flight details at least one week before arrival.

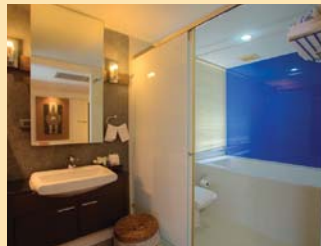
Public Holidays

Please visit the International House school holidays page on our website at:
www.ihbangkok.com/holidays

We can also assist you with accommodation at a cheaper hostel with a shared room.

Mona Suite

8 min Shuttle Bus + 5 min walk



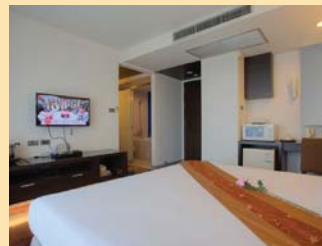
Studio - 38 m²

- 38 Square Meters
- Weekly Price: 9,100
- Monthly Price: 32,000
- Fully Serviced Apartment
- Gym, Saltwater Pool, Hotplate
- Refrigerator, Washing Machine
- Microwave, TV, WiFi, Aircon



Studio - 32 m²

- 32 Square Meters
- Weekly Price: 9,100
- Monthly Price: 30,000
- Fully Serviced Apartment
- Gym, Saltwater Pool, Hotplate
- Refrigerator, Washing Machine
- Microwave, TV, WiFi, Aircon



Studio - 27 m²

- 27 Square Meters
- Weekly Price: 9,100
- Monthly Price: 22,000
- Fully Serviced Apartment
- Gym, Saltwater Pool, Hotplate
- Refrigerator, Washing Machine
- Microwave, TV, WiFi, Aircon

*5,000 baht deposit for stays of 1-3 months. 1 month deposit for 4-6 month stays. 2 month deposit for 7-12 month stays.

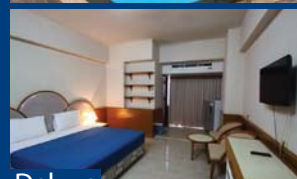
V.P. Tower

- | | |
|-------------------------|-------------------------|
| • Deluxe Room | • Suite Standard |
| • 32 Square Meters | • 64 Square Meters |
| • Weekly Price: 8,000 | • Weekly Price: 15,000 |
| • Monthly Price: 14,500 | • Monthly Price: 24,000 |
| • Serviced Apartments | • Serviced Apartments |
| • Washing Service Extra | • Washing Service Extra |
| • Restaurant | • Restaurant |
| • Pool and Garden | • Pool and Garden |

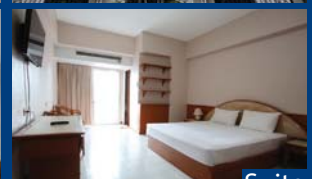
*1 month deposit for stays of 1-6 months.

International House Bangkok
A: 9th Floor, The Trendy Office Building,
Sukhumvit Soi 13, Khlongtoey-Nua, Bangkok,
10110 Thailand
T: +66 (0)2 168 7641
E: info@ihbangkok.com W: ihbangkok.com

5 min walk + 15 min
skytrain + 5 min walk



Deluxe



Suite



Accommodation

International House Chiang Mai

Students can now learn in beautiful and well equipped classrooms, eat delicious traditional Thai food, swim and laze about in a 25-meter pool, and sleep in our recently built accommodation, **all on-site**.



Option

Daily Price

Week Price

Month Price

Accom w/ Breakfast, Lunch, Dinner

1,500

8,750

31,350

Accom w/ Breakfast and Lunch

1,250

7,875

28,000

Booking Terms and Conditions

- Complete the student application form below and return it to us by email at studyholiday@ihbangkok.com or studyholiday@ihchiangmai.com.
- We will confirm the course and availability and send a deposit invoice for the 3,000 Thai baht registration fee and 25% of the course and accommodation, payable within 7 days of receipt. These fees are non-refundable.
- Final payment is due 1 month before the course starts.
- All fees are payable via international bank transfer in Thai baht or through an online payment system.
- We strongly recommend that the student does not book flights until after we have confirmed their place on the course and, if applicable, a student visa has been granted by the Thai authorities.

Airport Transfers

International House Chiang Mai is located 20 minutes from the airport. The cost for an airport transfer is 450 baht per person.

The prices quoted are for transfers from 06:00 to 21:00 (arrival time at the airport). If students need a transfer before 06:00 or after 21:00, these prices will be increased by 100-200 THB. Please note that we need the flight details at least two working days before arrival.



Cancellations

When a cancellation is received at least 30 days before the course is due to start, 50% of the course fees are refunded. For cancellations received with fewer than 30 days' notice, the course fee is non-refundable. Once the course has started, refunds cannot be given.

Airport Transfer Fees - Chiang Mai (One Way)
1 person, 450 baht.

Public Holidays

Please visit the International House school holidays page on our website at:

www.ihbangkok.com/holidays

Classes lost due to public holiday will be made up at other times or refunded.



1. Personal Information

Mr / Ms (please choose) First name: _____ Family name: _____

Address: _____

City: _____ Country: _____

Telephone: _____ Fax: _____ Email: _____

Nationality: _____ Date of birth: _____ Profession: _____

2. Course Type

- | | |
|--|--|
| <input type="checkbox"/> 1. General English 15
from _____ to _____ | <input type="checkbox"/> 5. Intensive Business English 25
from _____ to _____ |
| <input type="checkbox"/> 2. General English 25
from _____ to _____ | <input type="checkbox"/> 6. Intensive Business English 20
from _____ to _____ |
| <input type="checkbox"/> 3. Exam Preparation 25
from _____ to _____ | <input type="checkbox"/> 7. Private 1:1 - Total Hours: _____ Focus: _____ |
| <input type="checkbox"/> 4. Business English 25
from _____ to _____ | <input type="checkbox"/> 8. Mixed 25
from _____ to _____ |

3. Accommodation Yes No

Bangkok

- A. Furama Asok Room Type? _____
 B. Mona Suite Room Type? _____
 C. V.P. Tower Room Type? _____

Chiang Mai

- A. Onsite Accommodation (Breakfast, Lunch - Mon-Fri)
 B. Onsite Accommodation (Breakfast, Lunch, Dinner - Mon-Fri)

Arrival date: _____ Departure date: _____

4. Airport Transfer: Yes No

Flight Number: _____

Date: _____ Arrival Time: _____

5. Current Level of English: (please choose)

- Beginner (Private Class) Elementary Pre-Intermediate
 Intermediate Upper Intermediate Advanced (Private Class)

To find out your level, please take the online test at www.ihbangkok.com/leveltest.

Signed: _____ Date: _____

For further information, please contact us at:

International House Bangkok and International House Chiang Mai

9th Floor, The Trendy Office Building, Sukhumvit Soi 13, Khlongtoey-Nua, Wattana, Bangkok, 10110, Thailand

Tel: +66 (0)2 168 7641

Email: studyholiday@ihbangkok.com

ihbangkok.com

ihchiangmai.com